

Installing network unibg-studenti with Operating System Windows 8

Software Requirements

Microsoft windows8 Update with all patches available. It is recommended to connect to the site
microsoft windows update to get the latest updates of the system.

Wifi network card that supports 802.1X authentication with WPA / AES and compatible with the following radio standards:

IEEE802.11b (11Mbps)

IEEE802.11g (54Mbps)

Configuration

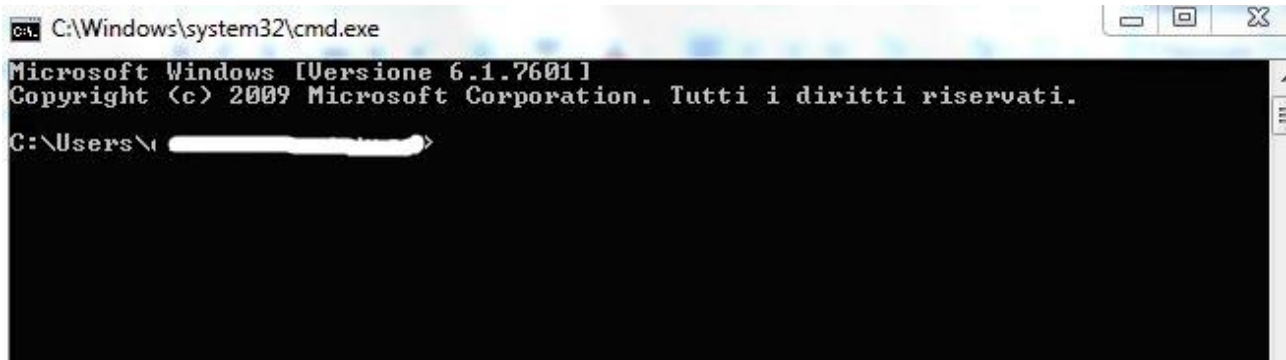
The following section shows how you can configure the network UniBG-students on a computer with

installing the operating system Windows 8. To carry out the instructions listed below must

be administrators of the machine.

Log in to your notebook and turn on the wifi network card

Go to command line (**START** menu -> **Search** -> **Write CMD** and execute program that will be found)



Write this command :

netsh wlan delete profile name=unibg-studenti + Enter

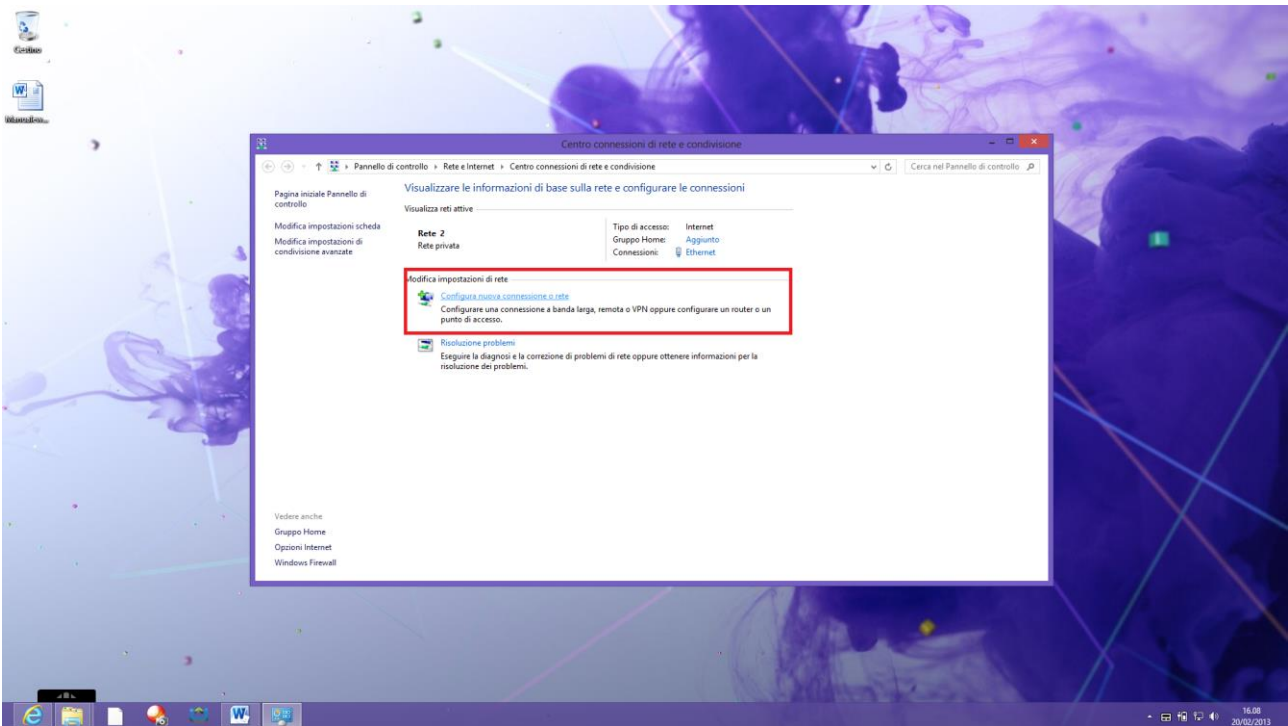
```
>netsh wlan delete profile name=unibg-studenti
```

Close a program and continue to follow instructions:

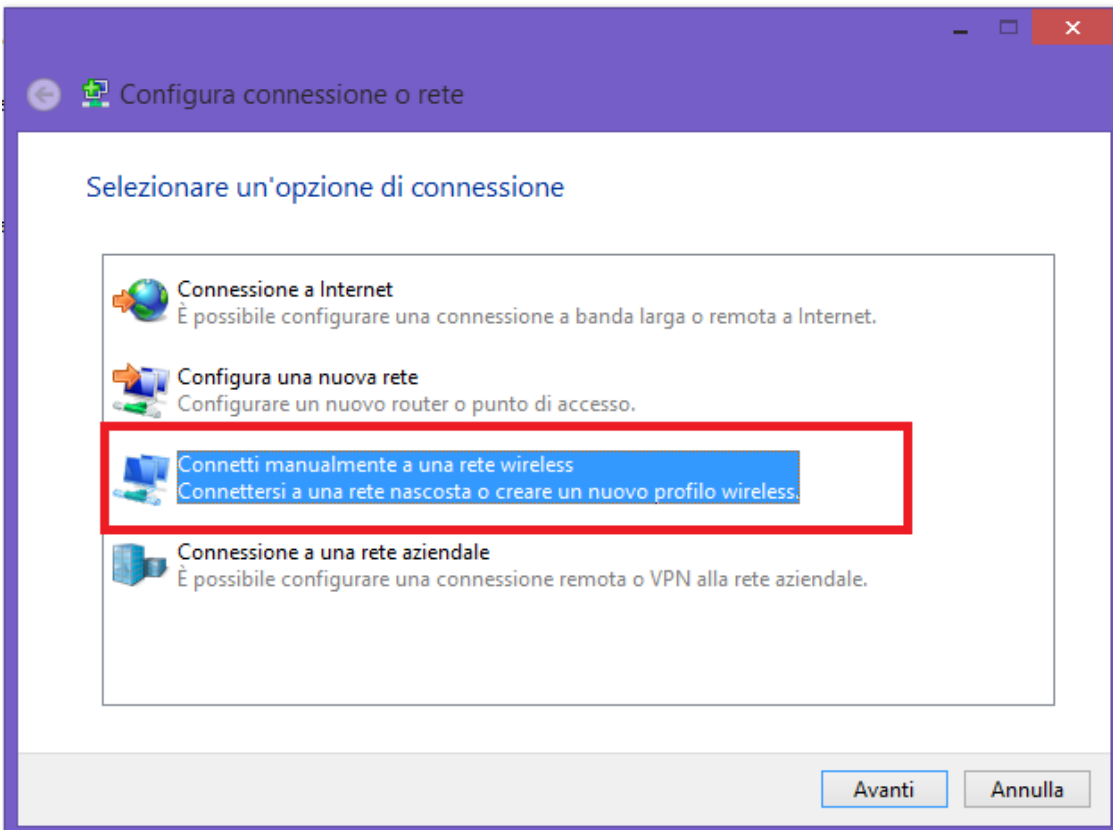
Right-click the network icon in the bottom right and click with the left-click "**Open Network and Sharing Center**" as below



Click on "Set up a new connection or network"



Click on "Manually configure a wireless network" – click on "Next"

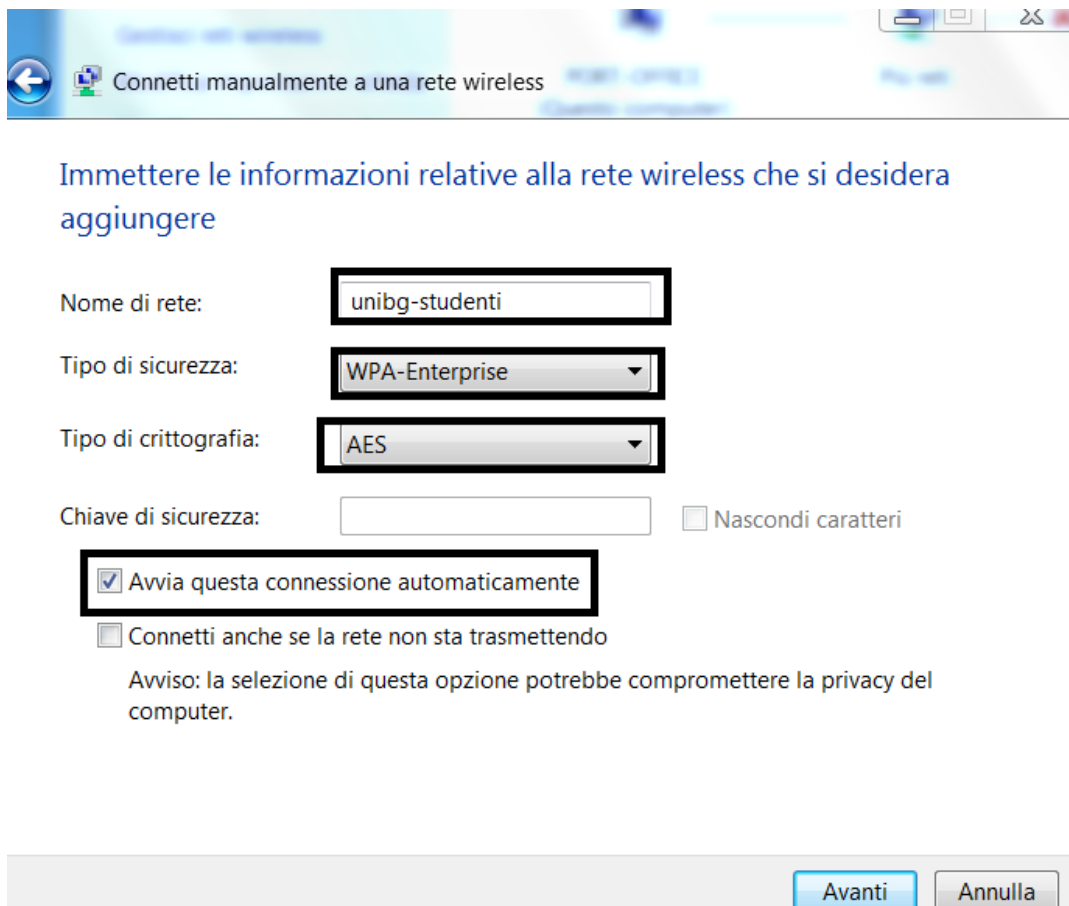


Put following information as shown in the picture

Nome di rete: unibg-studenti

Tipo di sicurezza: WPA-Enterprise

Tipo di crittografia: AES



Connetti manualmente a una rete wireless

Immettere le informazioni relative alla rete wireless che si desidera aggiungere

Nome di rete: unibg-studenti

Tipo di sicurezza: WPA-Enterprise

Tipo di crittografia: AES

Chiave di sicurezza: Nascondi caratteri

Avvia questa connessione automaticamente

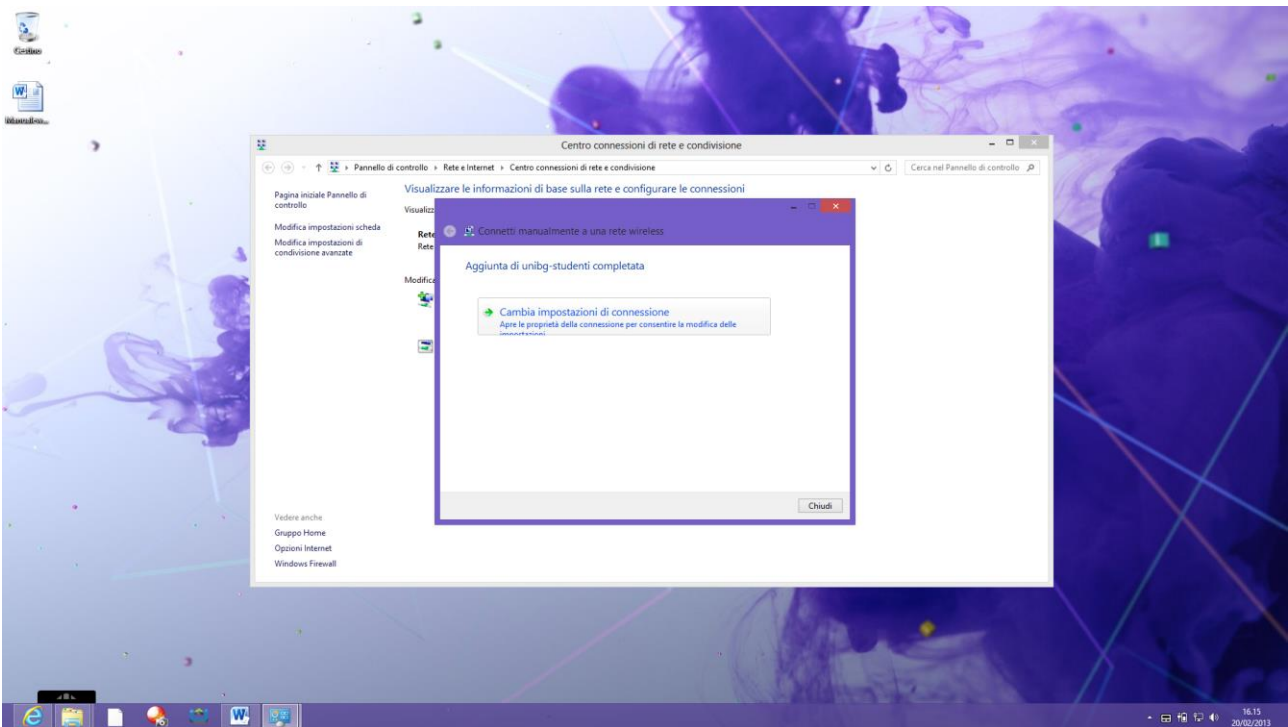
Connetti anche se la rete non sta trasmettendo

Avviso: la selezione di questa opzione potrebbe compromettere la privacy del computer.

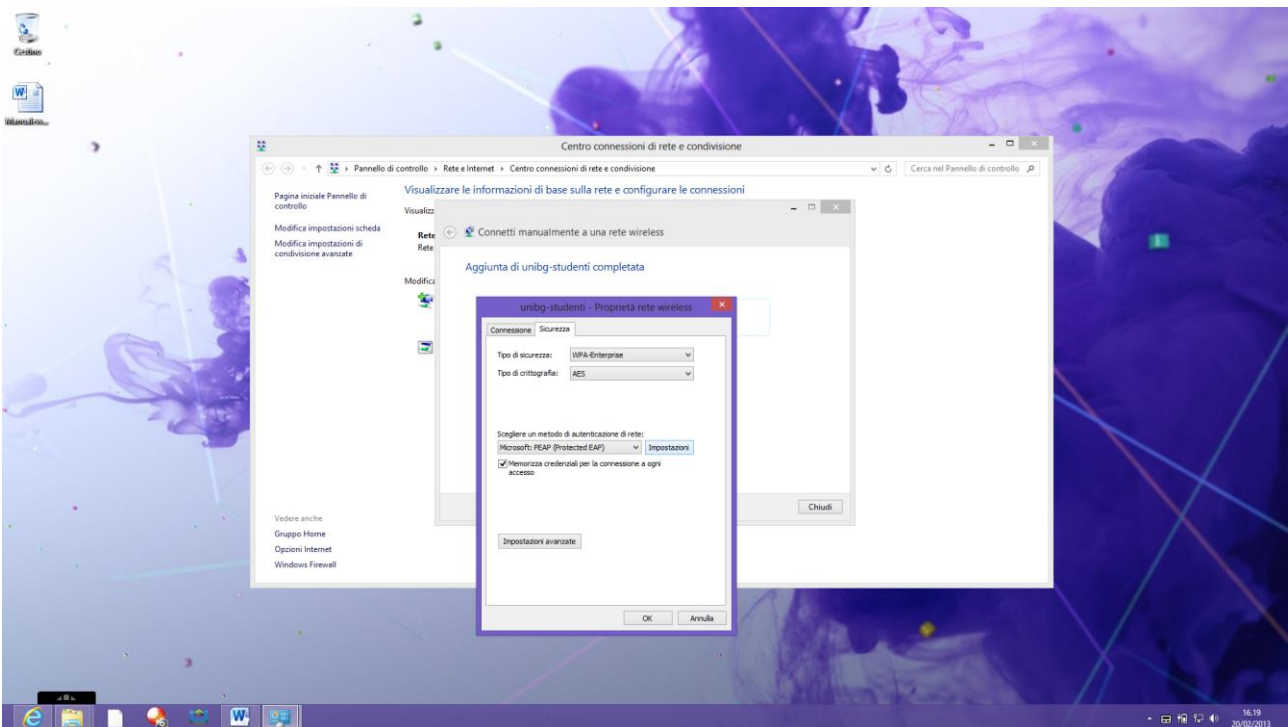
Avanti Annulla

click "Next"

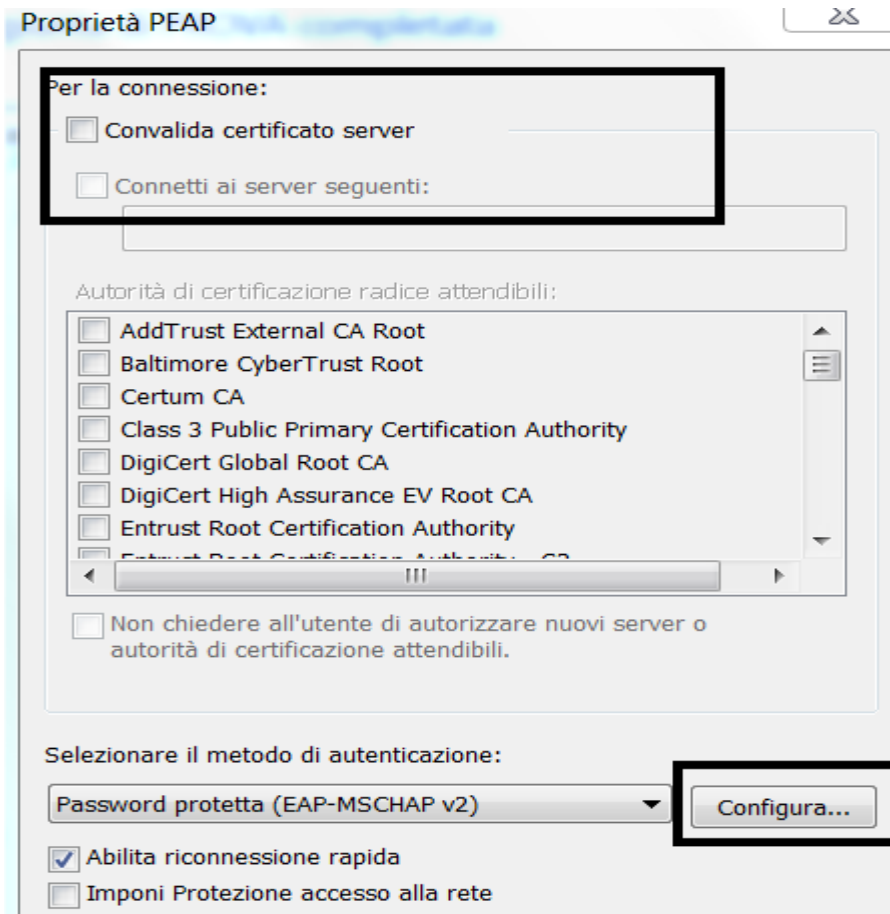
Click on “change connection settings”



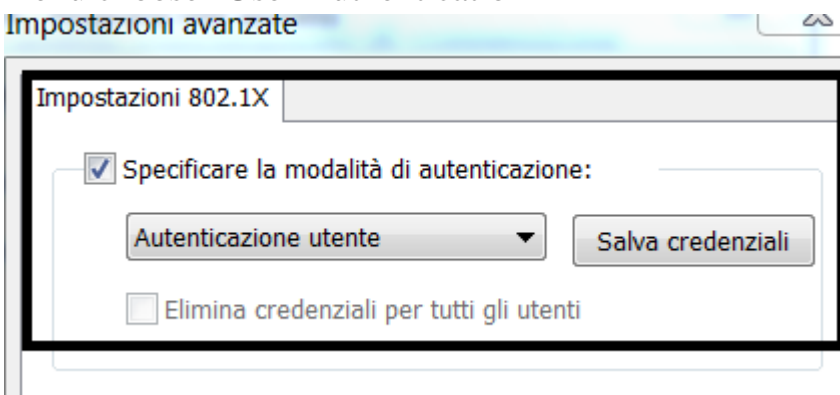
Click on security tab – Click on “settings”



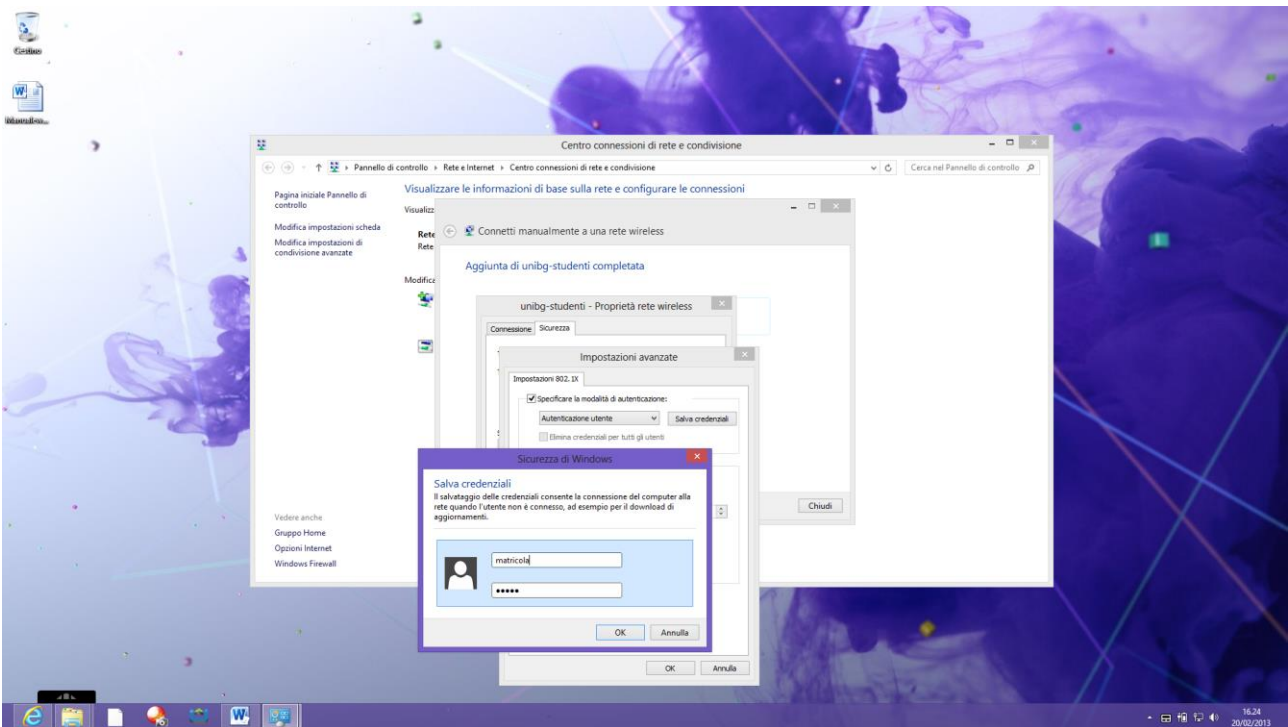
Remove flag from "Verifying the identity of the server using the certificate validation" and click "Ok"



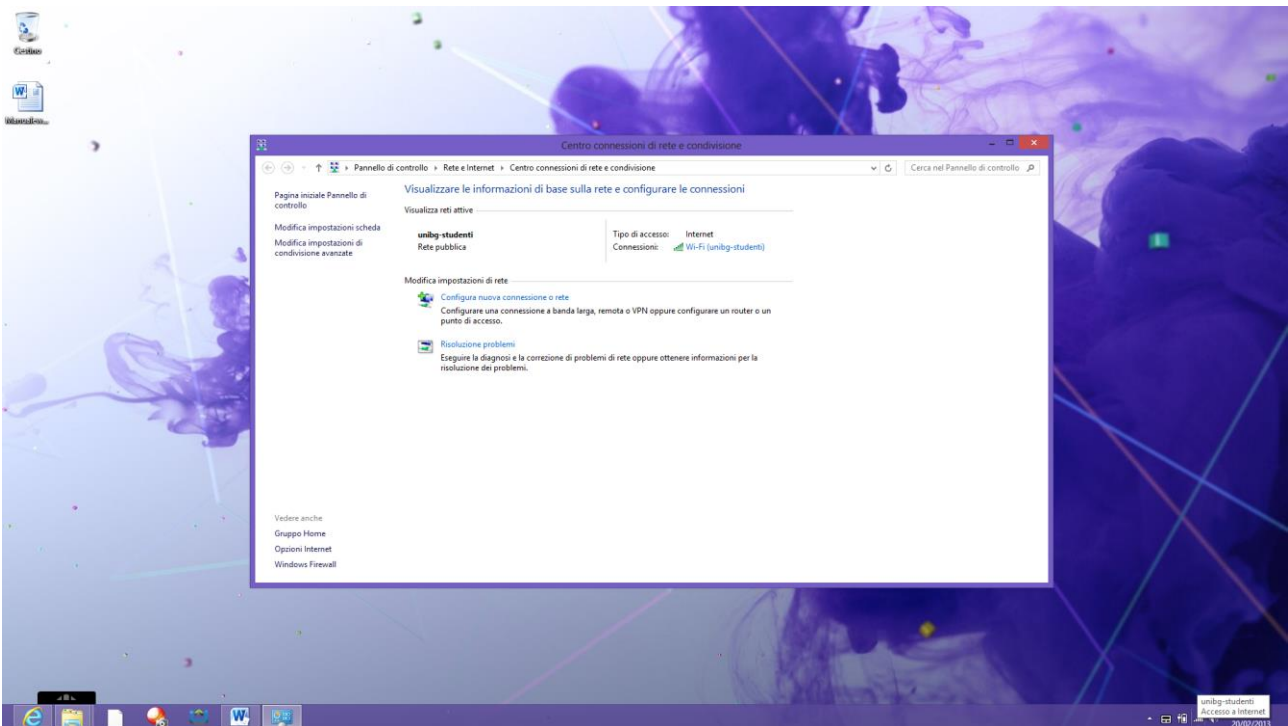
click on "advance settings" – flag on "Specify authentication mode" and from the menu choose "User Authentication"



Click on “save credential” and insert your credential



Close windows clicking “OK”.



In ottemperanza di quanto richiesto nel Decreto Ministeriale del 16 Agosto 2005, ai sensi dell'articolo 7, comma 4, della legge n. 155 del 31 luglio 2005 (legge Pisanu):

- tutto il traffico Internet viene monitorato e verranno salvate informazioni sui siti web visitati;
- tali informazioni sono salvate con modalità informatiche e potranno essere fornite su richiesta, in conformità al codice di procedura penale, alla Polizia Postale e all'Autorità Giudiziaria;